

## SWIFT TRAWLER 37

Overall length / Longueur hors tout	11,29m	37'
Hull length / Longueur coque	10,83 m	35'6"
Overall beam / Largeur hors tout	3,98 m	13'1"
Sedan Air draft / Tirant d'air Sedan*	4,64 m	15'3"
Flybridge Air draft / Tirant d'air Flybridge*	4,97 m	16'4"
Draught / Tirant d'eau	1,17 m	3'10"
Light displacement / Déplacement lège CE	8 302 kg	18,298 lbs
Fuel capacity / Capacité carburant	800 L	211 US Gal
Freshwater capacity / Capacité eau douce	300 L	79 US Gal
Hot water heater capacity / Capacité chauffe-eau	25 L	7 US Gal
Accommodation / Couchages	4_2	
Category EC / Catégorie CE	B8 / C10 / D10	
Max engine power / Puissance moteur max	440 HP	
Naval Architect / Architecte naval	Dixon Yacht Design	
Design	Dixon Yacht Design	



Flybridge



Sedan



Hull Signal Grey - Flybridge



Hull Signal Grey - Sedan





Flybridge - Standard



Sedan - Standard



Flybridge - Skylights option



Sedan - Skylight option



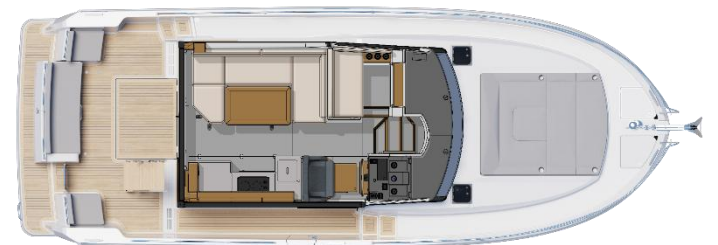
Flybridge - Silent boat option



Sedan - Silent boat option



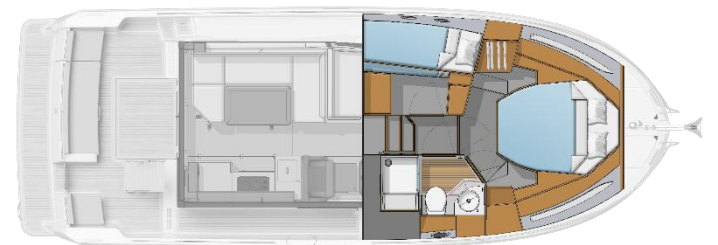
Main deck - Standard



Main deck - Cockpit sliding bench seat option



Main deck - Cockpit sliding bench seat option



Lower deck



## ENGLISH / Standard Equipment

### DECK EQUIPMENT

- Bulwark door on starboard side
- Open bow pulpit with stainless steel wire

### MOORING ANCHORING

- Stainless steel bow fitting
- Stainless steel anchor plate
- 8 Stainless steel mooring cleats (L 300 mm / 12")
- Stainless steel martyrs
- 1 Self-bailing anchor locker - Closing hatch

### COCKPIT

- Self-draining cockpit
- 1 Lockable cockpit locker with gas struts
- Gas locker
- Hot/cold water cockpit shower
- Stainless steel access ladder to flybridge or roof (Sedan) with wooden steps and stainless steel handrails, folds vertically
- Slot in ceiling for optional aft locker
- 2 single seats port and starboard
- Aft pulpit and stainless steel gate
- 1 Removable stainless steel swim ladder
- Aft platform integrated into deck
- 2 Speakers 6.5 XS

### SEDAN VERSION

- Self-draining roof
- Double storage compartments in front of roof
- Stainless steel perimeter handrails
- Polyester access hatch with gas strut
- Stainless steel mast for all-round lighting, space for radar (optional)
- Watertight electrical socket

### FLYBRIDGE VERSION

- Self-draining flybridge
- Storage space forward of flybridge
- Polyester access hatch with gas strut
- Tinted PMMA windscreen
- Stainless steel pulpit and handrails
- Stainless steel mast for all-round lighting, space for radar (optional)
- Helm console with handrail, 2 cup holders, storage compartment and 1 USB/C socket
- 220V waterproof socket
- Space for navigation electronics
- Stainless steel steering wheel
- Steering compass
- Horn
- Fusion RA210 + 2 speakers 6.5" XS
- 1 Sliding pilot seat with bolster function
- Co-pilot bench seat with tilting backrest
- Flybridge saloon on port side with a U-shaped bench seat with built-in storage and a removable wooden table
- PVC upholstery with filter foam
- Space for BIBs

### SALON

- U-shaped salon seating
- Wooden table convertible into extra bed
- Additional bed for salon in chosen upholstery
- Storage space under seat
- Electrical socket 3-panel sliding rear window with black lacquered aluminium frame
- Interior curtains
- Fusion RA210 + 2 speakers 6"

### GALLEY

U-shaped kitchen:

- Corian worktop
- Stainless steel sink with cover, mixer tap cold/hot pressurised water 2-burner gas hob and gas oven
- Fridge 130L - 34 US Gal
- Cupboard and shelving units
- Sliding glass
- Sockets
- Dustbin

### PILOT STATION

- Fixed co-pilot bench seat with 3 cupholders, electric socket, USB/C
- Tilting chart table
- Storage space under co-pilot bench seat
- Fixed glazing to port
- Interior curtains
- Sliding pilot bench seat and Bolster system
- Fixed steps and folding platform
- 1-pane sliding side window with direct access to starboard side deck
- Clear glass windscreen with aluminium frames, lacquered black
- 3 Electric windscreen wipers, with synchronisation system
- Windscreen washer with tank integrated into water system
- Defogger
- Opening helm console with space for navigation electronics
- Engine dials : Revolution counter, Fuel gauge, Alarms, Rudder angle indicator, Flap indicator
- Navigation lights
- Foghorn
- Engine controls
- Leather-wrapped steering wheel
- Steering compass
- USB/C socket
- 2 Cup holders
- Handrail

### OWNER CABIN (FRONT)

- Double berth
- Marine mattress
- 2 Wardrobes, one with shelves
- Large storage locker under berth
- 1 Opening deck hatch with blackout blind
- 2 Opening hull portholes with blackout curtains
- Direct access to shower room
- Electrical sockets
- 2 reading lights + USB sockets A/C

### HEAD (STARBOARD)

- Shower with Corian seat and PMMA doors
- Compass electric toilet
- Sink with mixer tap
- Mirror
- Storage units
- Socket
- 2 coat hooks
- Tumblers with toothbrush holder x2
- 1 Opening porthole with curtain

### GUEST CABIN (PORTSIDE)

- Bunk beds
- Marine mattress
- Storage space with shelves
- Storage space under berth
- 2 opening hull portholes with blackout curtains
- Socket
- 2 reading lights + USB sockets A/C

### MOTORISATION

- Yanmar 1 x 400 HP
- Propulsion shaft line
- Propeller
- Fuel filter with decanter
- Seawater filter
- Engine room insulated with high density foam 40 mm / 1-½" thick
- Air intakes for engine hold cooling, on hull
- Fire extinguisher
- Fuel tank filler
- Aluminium fuel tank (Capacity = 800 L / 211 US Gal) with predisposition for FPS (Fuel Polishing System) connection
- Steering system: Stainless steel suspended rudder
- Hydraulic steering



## ENGLISH / Standard Equipment

### ELECTRICITY

- Shore power (220 V)
- 2 Engine batteries
- 3 Service batteries (3 x 12V - 140Ah)
- Battery charger
- TV antenna
- Interior lighting (ceiling lights, reading lights)
- Exterior lighting (navigation lights, 360° lights, cockpit spotlights, blue LEDs on flybridge)

### PLUMBING

- 1 Manual bilge pump (Cockpit)
- Automatic electric bilge pump
- Water generator for pressurising the hot/cold water circuit
- Water heater 25 L / 7 US Gal operating on engine heat exchanger and 220 V
- Water tank filler pipe
- 2 Water tanks (2 x 150 L / 2 x 40 US Gal)
- 1 Grey water buffer tank (8 L / 2 US Gal)
- 1 Rigid black water tank 88 L / 23 US Gal
- Stainless steel water filler pipe

### SMART BOARD

SEANAPPS™ connected technology:

Allows you to monitor the condition of your boat and receive alerts and maintenance recommendations via the associated mobile application.

The type of information collected (GPS position, batteries, engine information, navigation data, etc.) varies according to the configuration of the boat.

### MISCELLANEOUS ITEMS

- Smoke detector
- Owner's manual

## ENGLISH / Optional Equipment

### INTERIOR LAYOUT / ONBOARD COMFORT

- Fully electric galley (induction hob, multifunction oven)
- Fridge (150 L / 40 US Gal) and freezer (50 L / 13 US Gal)
- Forced-air heating 5500W
- Tableware kit - 6 persons
- Side door and aft bay mosquitos screens + portholes
- Entertainment pack Forward cabin : Fusion Apollo RA670 + 2 speakers + 28" TV pre-fit
- Entertainment Pack Saloon - Flybridge version: Fusion Apollo RA670 + 22" TV pre-fit
- Entertainment Pack Saloon - Sedan version: Fusion RA670 + 22" TV pre-fit
- Electric opening wheelhouse hatch skylights (above helm station)

### EXTERIOR OPTIONS

- Complete mooring kit:
  - Delta anchor 16 kg/35 lbs
  - Chain (diameter 10 mm) - 20 m/91'10"
  - Mooring cable (diameter 18 mm) - 40 m/131'3"
  - 4 mooring lines (diameter 14 mm) - 10 m/32'10"
- 6 Fenders (diameter 250 mm) - height 700 mm/2'4"
- Cockpit sliding bench seat depending on upholstery chosen
- Dinghy davits on fixed aft platform (150 kg - 331 lbs)
- Aft cockpit closing kit Graphite
- Bimini Graphite - Flybridge version only
- Sun awning for roof Solstis black - Sedan version
- Dodgers (Sedan or Flybridge version) graphite
- Sun awning for foredeck Solstis black
- Easy load davit and roof rack for paddle (Max. weight : 80 kg / 176 lbs) - Sedan version
- Easy load davit and roof rack for paddle (Max. weight: 80 kg / 176 lbs) - Flybridge version
- Manual folding gangway
- Wooden folding cockpit table + 2 folding chairs
- Foredeck sunpad mattress according to chosen upholstery
- External wheelhouse curtains Black Solstis
- Wood slat cockpit and starboard passageway - standard version
- Wood slat cockpit and starboard gangway - sliding bench seat version
- Wood slat for sedan roof

### CONSTRUCTION

#### HULL

- Composition: Sandwich (Polyester resin - Glass fibre / Balsa core)
- Gelcoat colour white 9010
- Structural hull counter-mould made of monolithic laminate (Polyester resin - Glass fibre)
- Semi-planing hull

#### DECK

- Composition: Sandwich (Polyester resin - Glass fibre / Balsa core)
- Structural counter-mould made of monolithic laminate (Polyester resin - Glass fibre)
- Gelcoat colour white 9010
- Diamond-tip type non-slip surface

### ATMOSPHERE

- Interior joinery Alpi Teck
- Flooring Rovere Aleve
- Interior upholstery Crevin Libra 50
- Pilot seat PVC Nautilus Asparagus
- Exterior upholstery Crevin Dolce 54
- Interior blackout curtains fabric Interval 22

### ENGINE

- Stern thruster
- Yanmar 1 x 440 HP
- Zipwake automatic trim system
- Orin D50 cutter
- Automatic fire extinguisher in engine hold

### WATER SYSTEMS

- Grey water tanks (2 x 80 L / 21 US Gal) deck/sea drainage

### ELECTRICITY

- Specifications Germany
- Specifications US
- Specifications Australia
- Specifications 115V 60 Hz
- Specifications Switzerland (with grey water reserve deck drain only)
- Specifications Brazil

### NAVIGATION ELECTRONICS

- Raymarine Radome Quantum Dopple
- Windvane / Anemometer
- ClearCruise Raymarine (augmented reality)



## TRIM LEVEL

	Essential Sedan	Essential Flybridge	Comfort Sedan	Comfort Flybridge
• Electric windlass	X	X	X	X
• Bow thruster 80kgF	X	X	X	X
• Deck wash pump	X	X	X	X
• Deck spotlight	X	X	X	X
• Pre wiring heating	X	X	X	X
• Pre wiring air conditioning	X	X	X	X
• Inverter 2000 KvA	X	X	X	X
• Raymarine Axiom 9 PRO interior	X	X	X	X
• VHF Raymarine 90	X	X	X	X
• Sliding portside window in wheelhouse	X	X	X	X
• Universal Navionics chart (blank)	X	X	X	X
• Raymarine Axiom 9 PRO exterior		X		X
• Fresh water connection to quay			X	X
• Aft spotlights			X	X
• Separation curtain for salon extra bed			X	X
• Set of Flybridge covers (bench, console, table)				X
• Flyfridge drawer fridge – flybridge only				X

## ATMOSPHERE

	Standard	Option
<b>Interior woods</b> <ul style="list-style-type: none"> <li>• Alpi teak + Rovere Aleve floors</li> <li>• Alpi Oak + Brown oak floors</li> </ul>	X	X
<b>Interior upholstery</b> <ul style="list-style-type: none"> <li>• Crevin Libra 50</li> <li>• Crevin Libra 23</li> <li>• Crevin ITO 05</li> </ul>	X	X X
<b>Exterior upholstery</b> <ul style="list-style-type: none"> <li>• Crevin Dolce 54</li> <li>• Kizuna Checker Winter</li> </ul>	X	X
<b>Hull colors</b> <ul style="list-style-type: none"> <li>• White</li> <li>• Signal Grey RAL 7004</li> </ul>	X	X

## PACKS

### ELECTRONIC PACK SEDAN VERSION

- Raymarine CAM300 rear IP camera
- Axiom 2 Pro 16" multifunction display in wheelhouse replacing 9"
- i70S autopilot
- Raymarine AIS 700
- Raymarine RealVision 3D sensor

### ELECTRONIC PACK FLYBRIDGE VERSION

- Raymarine CAM300 rear IP camera
- Axiom 2 Pro 16' multifunction display in wheelhouse replacing 9'
- Axiom 2 Pro 16' multifunction display in flybridge replacing 9'
- i70S autopilot
- Raymarine AIS 700
- Raymarine RealVision 3D sensor

### AIR CONDITIONING PACK

- 8.5 kVA Generator
- Tropical reversible air conditioning - 32 000 BTU

### SILENT BOAT PACK

- 6 solar panels (840 Wp: 2 x 160 Wp + 4 x 130 Wp)
- 2 lithium batteries (2 x 200AH)

### LUXE PACK OWNER CABIN (FRONT)

- Mirror on slatted door
- Slatted doors
- Padding on bulkheads
- Slatted bed
- Ohio carpet 8112 in owner's cabin (front)

BENETEAU - Vendéopôle - 2 rue du Grand Large - CS82531 GIVRAND - 85805 SAINT GILLES CROIX DE VIE - FRANCE.

Siège social : SPBI - BP 45 - 85170 DOMPIERRE SUR YON

Descriptions, illustrations, etc are provided only for your guidance.

Our models may undergo some standard modifications or improvements without notice.

JUNE 2025

